

## Christmas Rose

### Materials:

Yarn, DK or 4-ply, or 2 strands of finer yarn.

Use needles **AT LEAST 2 SIZES SMALLER** than usual (eg. size 10 or 11 for DK)

### Abbreviations:

- **Kfb** - increase by knitting into the front and then the back of one stitch
- **Pfb** - increase by purling into the back and then the front of one stitch
- **Slip 1** - transfer stitch from the left to right needles **WITHOUT KNITTING IT**

### Instructions:

Cast on 4 sts.

Row 1: Kfb, K to end (5 sts)

Row 2: Pfb, P to end (6 sts)

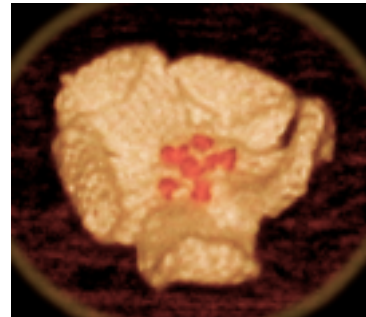
Repeat rows 1 & 2 twice more (10 sts)

Row 7: Slip 1, K to end

Row 8: Slip 1, P to end

Repeat rows 7 and 8 twice more

Cut yarn and keep first petal on the left hand needle.



Cast on 4 sts onto the needle holding the petal and make 4 more petals the same way. **DO NOT** break yarn on last petal.

Next row: K to end, K across all sts of other 4 petals (50 sts)

Next row: P

Next row: K2tog 25 times (25 sts)

Next row: P

Next row: K2tog 12 times, K1 (13 sts)

Next row: P2tog 6 times, P1 (7 sts)

Cut yarn and thread through remaining 7 sts.

### Making up

Draw the 7 sts together and fasten off.

Make **French knots**\* in contrasting colour or stitch small beads in the centre

### \*French Knots

Thread yarn onto large eyed needle. Bring yarn from the back to the right side of the flower. Keeping right side up, put needle through one stitch, wrap yarn around the pointed end and then pull the yarn through the wrapped yarn until the knot is made. Put the needle through to the back at one side of the knot. Bring the needle through to the front to make a second knot.