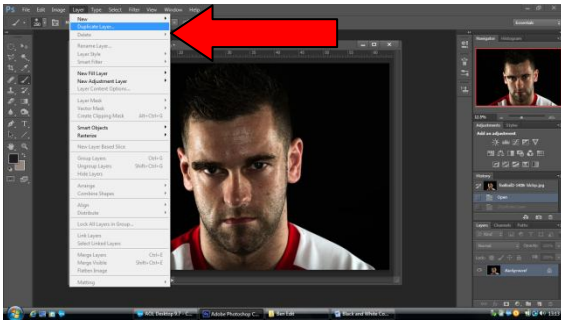
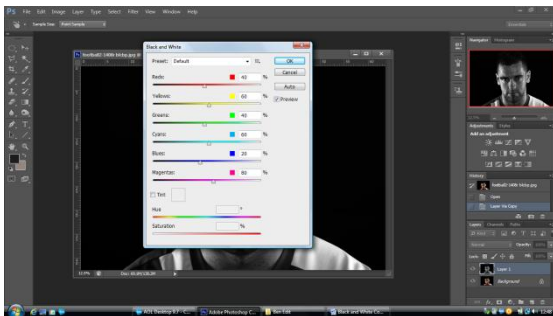


# Convert to Black and White using Colour Channels and Layer Mask

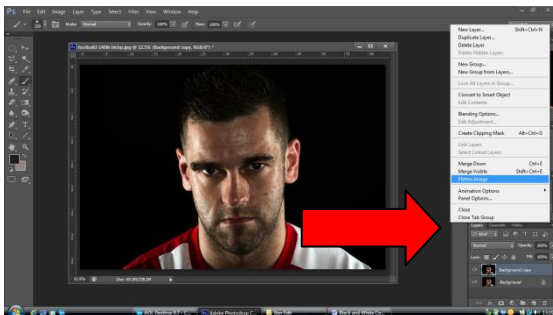
- Open image
- Duplicate image go to ... Layer – Duplicate layer ...or Ctrl J



- Always Save as ....do not edit original file
- Go to...Image – Adjustments – Black & White will bring up colour channels

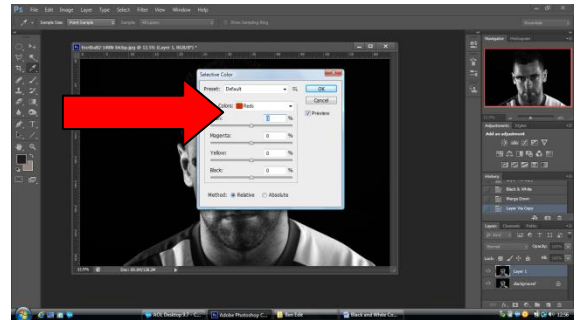


- Adjust colour channels...you will see different areas of image change tone...adjust until desired effect
- Flatten image ... at top of layer pallet

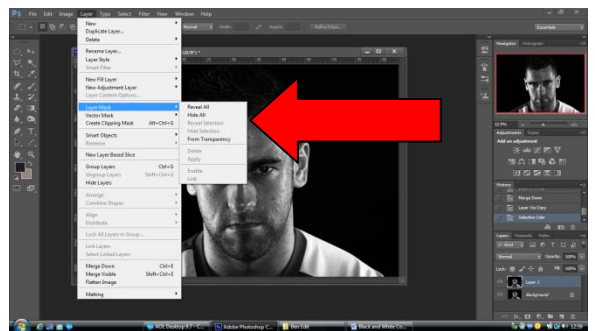


- Duplicate layer

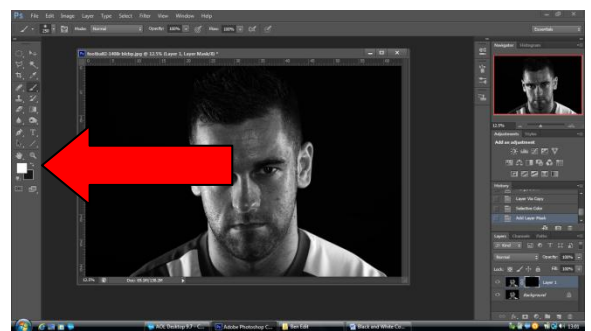
- Go to...Image – Adjustments – selective colour



- Choose white ....alter white to taste
- Go to...Layer- Layer mask- Hide all



- Ensure foreground Colour picker is white



- Use soft brush to paint back through areas you wish to highlight... when satisfied flatten image

- Do exactly the same with Black in selective colour...when satisfied flatten image