

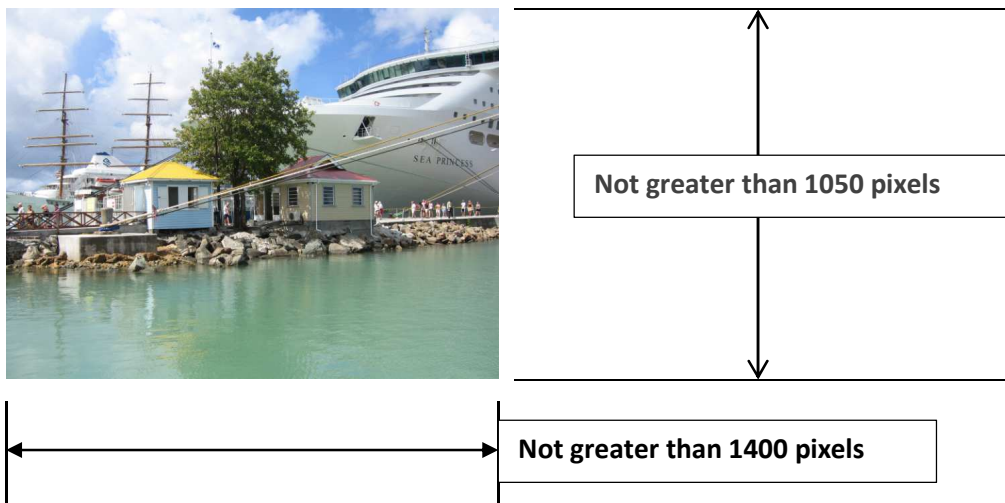


## HOW TO RESIZE AN IMAGE FOR COMPETITIONS

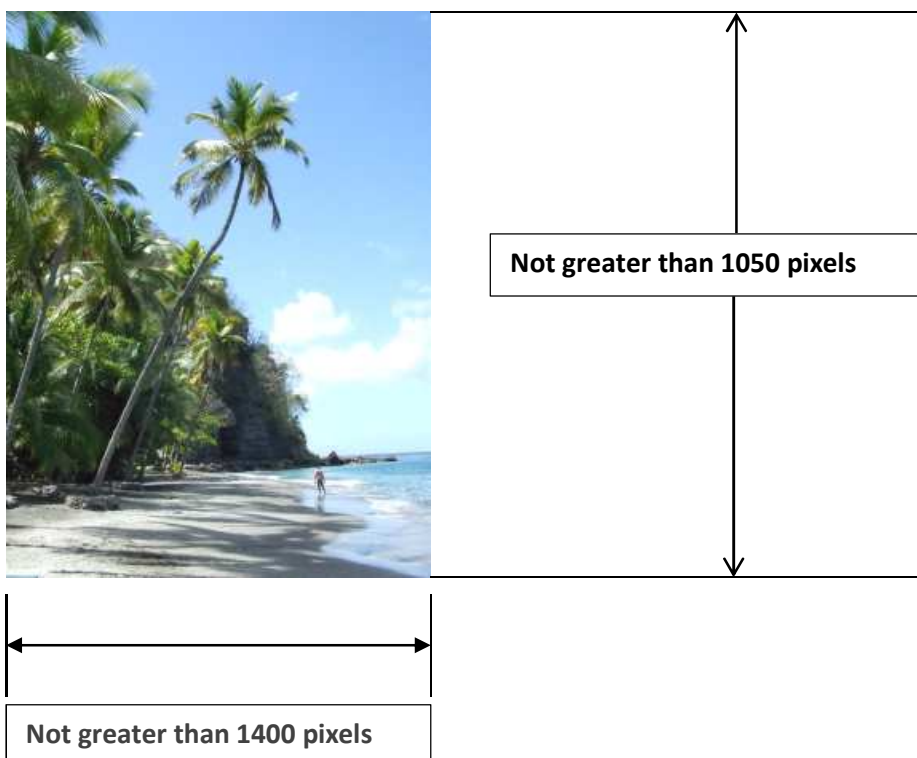
For competitions use images must be resized such that their maximum size does not exceed a width of 1400 pixels, or a height of 1050 pixels, regardless of whether the image is oriented in Landscape or Portrait mode.

Many image editing software programs have the facility to resize images. The example shown here uses Adobe Photoshop 'CS6' (The arrangements used in Photoshop 'Elements' is essentially the same).

### LANDSCAPE

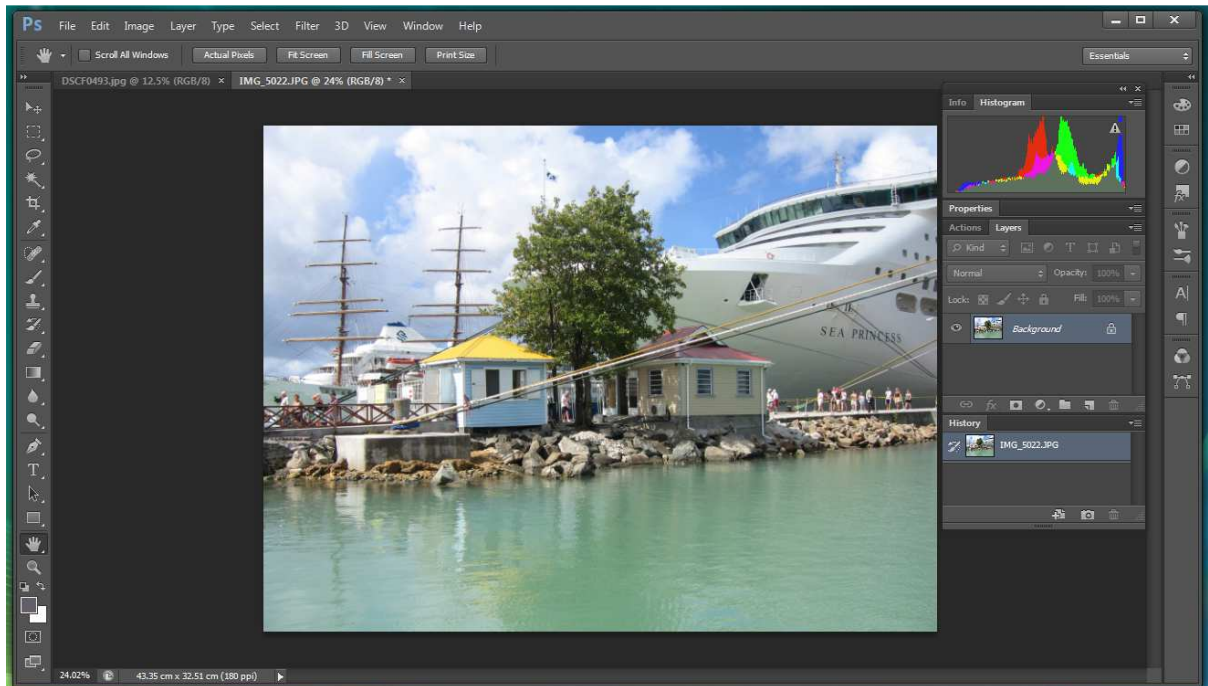


### PORTRAIT



1

Select the Image to be resized



2

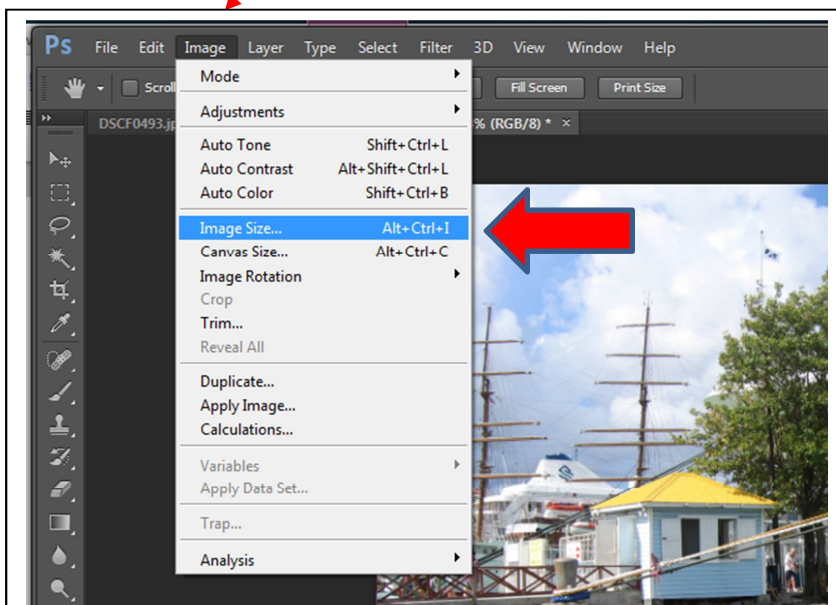
Select 'Image' from the menu ribbon



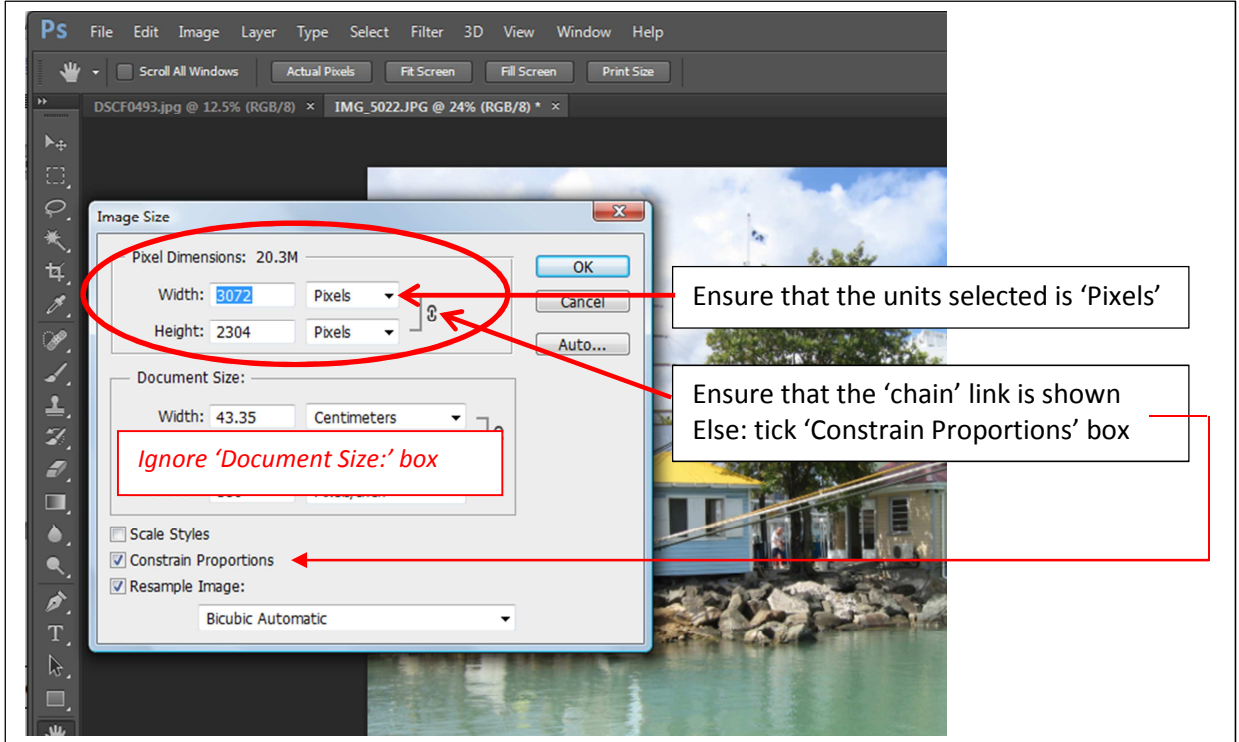
*NOTE: In Photoshop Elements: Image > Resize > Image Size*

3

Then select 'Image Size' option from the drop down menu

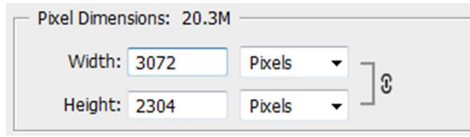


**4** The 'Image Size' window opens:



The image is in 'landscape' format – i.e. the Width is greater than the Height

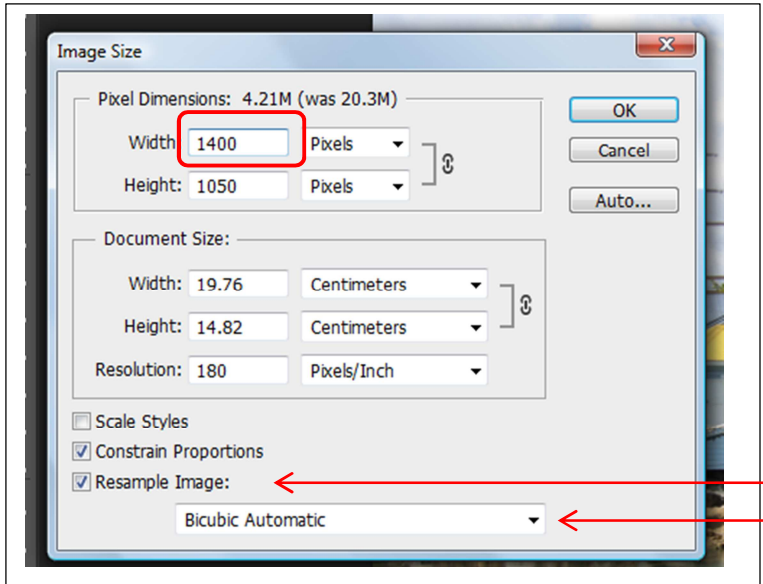
This can clearly be seen by the pixel dimension



Therefore select the 'Width' pixel dimension – in this example 3072, by double clicking the left mouse button.

**5** Type: 1400

Notice that the Height automatically adjusts to maintain the image's same aspect ratio.



In this particular case the 'Height' reduces to **1050** pixels – such that the maximum resolution of 1400 x 1050 is exactly achieved. (Not always the case –but OK)

**BUT:**  
If the Height shown was greater than **1050** – then, select the 'Height' box and change the value to 1050 – and accept the 'Width' dimension – which will in this case be less than 1400.

Ensure that this is selected  
Ensure selection is as shown, or 'Bicubic Sharper'